



To Protect  
and Preserve

SEBEC LAKE ASSOCIATION, INC.

P.O. BOX 303

Dover-Foxcroft, Maine 04426-0303

Random thoughts from lakeside, don't I wish it !!!!!!!

It certainly was a "different" summer. We normally swim most every day, but, not this year. If we were in Sebec Lake a half a dozen times, I'd be surprised.

We did manage to launch the "GEM" in April for her tenth season back on the lake. The other accumulated boats were soon to follow. There simply isn't anything in this world that beats "Messing about in boats" on Beautiful Sebec Lake.

I'd like to Thank Fred Wappler of Sebec Marine and Sport for his generous donation to The Sebec Lake Association.

Another generous donation from Bion and Marg Francis in memory of longtime Sebec Laker, Will Knappman, who passed away this past summer, must also be acknowledged. Thanks.

We participated in a number of parades this past season, flying the Sebec Lake banner on our antique wooden runabout, towed by our old Jeep pickup. A good looking rig if I do say so myself.

I'd like to take this opportunity to Thank our new Treasurer, Lois Reynolds for all of her work in updating our Directory of property owners on the lake. Lois made it her job to contact the 4 towns

**McKusick Petroleum Co.**

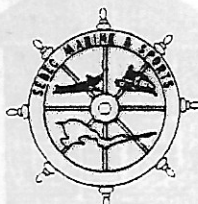
*Professional Heating Services*

Heating Oil Gasoline  
Bulk & Cylinder Gas



32 Summer Street  
Dover-Foxcroft

564-3406  
1-800-564-3835



**SEBEC MARINE  
&  
SPORTS**

8 Cotton Brook Road  
Dover-Foxcroft, ME 04426  
(207) 564-2617

**Dover Auto Parts, Inc.**

27 Summer Street  
Dover-Foxcroft  
(207) 564-2100 • 564-3353

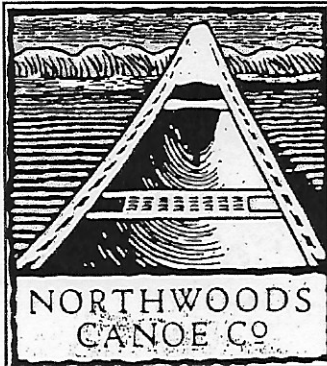


**NAPA Auto Parts**



Main St, Guilford  
876-3594

Howard A. Leland, President



Custom Building Restoration  
and Repair of Wood & Canvas  
Canoes and Boats

**Rollin Thurlow**

336 Range Road  
Atkinson, Maine 04426

**(207) 564-3367 PH**

web: [www.woodencanoes.com](http://www.woodencanoes.com)  
Info@woodencanoes.com



## MOOSEHEAD FURNITURE FACTORY OUTLET STORE

"Maine's Most Unique Shopping Experience!"

97 E. Main Street, Dover-Foxcroft

**Mon-Sat 9AM to 5PM • 564-2600**

*Factory Seconds-Discontinued Items  
Show Samples-Overruns*

Simmons Mattresses-Shard Pottery Outlet  
Maine Highlands Guild Arts & Crafts

Surrounding Sebec Lake and get updated property owners and mailing addresses. This will hopefully make our mailing of our newsletter more efficient. Thanks, Lois.

Our, esteemed, lake level and clarity monitor, Director Bob Hall has pleased us all with his findings of the superb quality and quantity of our lake water. Bob faithfully carries out his duties from early season thru October. He then submits them to the Maine Volunteer Lake Monitoring Association where they are tabulated and recorded. All of us indeed owe Bob Hall and the Maine Volunteer Lake Monitoring Association for their efforts.

The Sebec Lake Association yearly donation to them is certainly put to good use. Their Thanks to us for our donation is always promptly acknowledged.

What a fish !!!!!!!!!!!!!

Lyle Marelli landed a 23lbs, 41inch Togue (Lake Trout) on March 13, 2003 ice fishing on Sebec Lake. He caught the monster in approx. 70 feet of water, 150 feet or so off shore in front of his Fire Road 10 camp in Bowerbank. The Game Warden was called to sign off on the fish. It's believed to be the largest Lake Trout caught.

### SEBEC VILLAGE MARINE

#### INSIDE BOAT STORAGE

*Includes: Pick up — winterize,  
storage, spring start and delivery  
Dock Side Service for Storage Customers*

New & Used Boat Sales, Rentals,  
Docks, Fuel & Boat Accessories



#### Ice Cream & Take-out Restaurant

Located at: 668 Sebec Village Rd. • Sebec, Maine

**207-564-8610**



Serving Dover-Foxcroft since  
the 1800's



**Webber** **ACE**  
Hardware

404 Essex Street • Dover-Foxcroft

**564-2751**



# FRIGHTENING FACTOIDS

## About Aquatic Invaders



- ✪ A one-inch plant fragment, or a single seed carried on a boat or trailer can begin the infestation of an entire lake. Invasive species, unlike other forms of pollution, are self-sustaining.
- ✪ An invasive plant population in a lake can double or triple in size every year.
- ✪ Invasive plants are forever! There are very few documented cases of successful eradications.
- ✪ Some of the control measures used to fight invasive aquatic plants are nearly as destructive to lakes as the plants themselves. Control measures may threaten rare or endangered species in a water body.



- ✪ Lake associations and towns in other states have been battling Eurasian milfoil for decades! Approximately 8-10 Million dollars in public money is spent fighting this plant every year.
- ✪ Invasive aquatic plants can compete with and eliminate beneficial native aquatic plants.
- ✪ The introduction of a single invasive species to a lake can virtually ruin recreational opportunities, alter fish and wildlife habitat, affect water quality and lower shoreline property values.
- ✪ Recent research in Vermont shows that invasive plants can cost shoreline landowners on infested lakes over \$12,000 each in lost property values!
- ✪ Maine's neighboring states spend hundreds of thousands of dollars each year to prevent and control the spread of IAS.
- ✪ All of the New England States, as well as 41 other states and six Canadian provinces are battling Eurasian milfoil, water chestnut, and a broad group of other invasive species.
- ✪ Hydrilla can be even worse than Eurasian milfoil (EWM)! This aquatic invader can completely overtake a population of EWM! From 20-30 million dollars in public money is spent every year battling Hydrilla in the US.
- ✪ Massachusetts spends over \$290,000 annually on grants for local lake projects, most of which is spent battling invasives in their 298 infested lakes.
- ✪ The cost of aquatic invaders could be enormous to Maine. If only a fraction of Vermont's infestation occurred in Maine's southern five counties, the property loss value alone would exceed \$11 million, and control costs could reach \$2-4 million/year! This does not even take into account losses to tourism, water sports activities, and massive alteration of aquatic habitat.

*The most effective and inexpensive approach to the problem of invasive aquatic species is PREVENTION.*

*Maine lakes and ponds are threatened by a number of potential problems related to human activities, including excess algae growth from watershed development, contamination by toxics such as mercury, gas and oil residues, sedimentation from soil erosion, and others.*

*The infestation of a lake by an invasive species has the potential to overshadow all of these!*



**SEBEC LAKE ASSOCIATION**  
**Treasurers Report July 27, 2003-July 23, 2004**

**Income**

<b>Beginning Balance in checkbook</b>	<b>\$2,500.00</b>
<b>Dues @ \$15    \$15x436 families</b>	<b>\$6,540.00</b>
<b>Donations</b>	<b>465.00</b>
<b>Advertising</b>	<b>320.00</b>
<b>Charts</b>	<b>84.00</b>
<b>Maps</b>	<b>52.50</b>
<b>IMO Fern Palmer</b>	<b>435.00</b>
<b>Interest in Checking account</b>	<u><b>2.93</b></u>
	<b>\$10,399.43</b>
<b>Savings Account with Bangor Savings</b>	<b>\$10,820.82</b>

**Expenses**

<b>Newsletter Expenses (4 letters)</b>	<b>\$4,198.30</b>
<b>Post Office Box in Dover-Foxcroft</b>	<b>58.00</b>
<b>Office Supplies</b>	<b>292.92</b>
<b>Insurance Howard Ins. Dover-Foxcroft</b>	<b>1563.00</b>
<b>Checking Account-Business System</b>	<b>46.49</b>
<b>Maine Volunteer Lake Monitoring Program</b>	<b>500.00</b>
<b>YMCA – meeting room</b>	<u><b>100.00</b></u>
	<b>\$6,758.71</b>

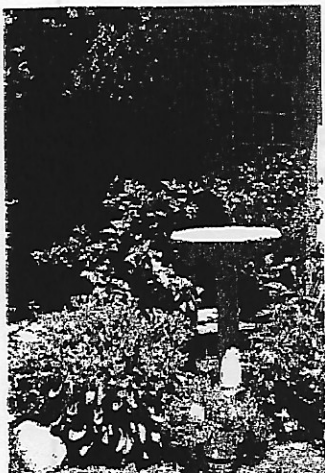
**Total Funds Available \$10,399.43 - \$6,758.71+ \$10,820.82 = \$14,461.54**

**Lois W. Reynolds Treasurer:      Balance in checkbook \$3,640.72**



# the Water Column

A Publication of Maine Volunteer Lake Monitoring Program



Sebec Village Shops, Inc.

Cafe: (207) 564-3223

Market: (207) 564-3433

Post Office: (207) 564-0136

Fax: (207) 564-8058

## Lake Lingo

By Scott Williams

### Lake Foam



Everyone has seen it at one time or another; and it seems like nearly everyone has questions about this whitish-brown, frothy stuff that occasionally appears along the shoreline of most lakes and ponds (not to mention rivers and streams). Commonly referred to as "lake foam", this substance is, almost always, a simple, natural byproduct of the decomposition of algae, zooplankton and other aquatic organisms.

Through the process of decomposition, natural organic compounds that have the capacity to reduce the surface tension of water molecules are released into the water. This results in the formation of foam, as air is mixed in. Natural wind and wave action stirs in more air, and *voila*: lake foam! This substance can easily accumulate several inches deep, or more, along downwind shoreline areas following periods of breezy weather.

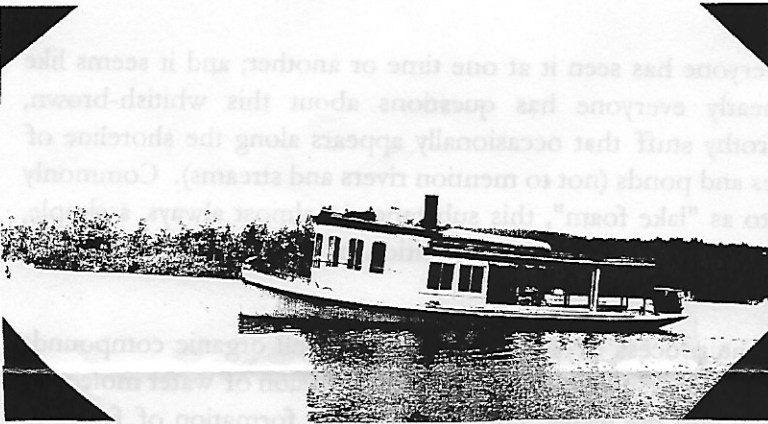
Lake foam is unlikely to be from soaps and detergents, but it *is* possible. If there is a question about the source, check around the immediate area for a possible discharge point - a pipe, or channel running across the land that shows evidence of foam. It is not unusual to see foam accumulations in the outlet pools of road culverts, once again, from natural sources, because foam-producing organic substances can also leach from the soil.

If the foam covers a large area, or is found in numerous locations along the shoreline, it is even more likely that the source is natural. Maine DEP Biologist Dave Courtemanche determined that it would take nearly 100,000 pounds of detergent to suds-up a shallow, 100 acre lake! One very simple way to distinguish natural lake foam from the detergent-based stuff is by performing the "sniff test". Natural foam generally smells earthy, or fishy, whereas suds from soaps and detergents are nearly always heavily perfumed.

## Steamer "MARION" ca. 1910

### Is it safe to tread? Tips for checking ice conditions on lakes.

Ice Thickness (inches)	Permissible load
2	One person on foot
3	Group of people walking single file
7.5	Passenger car (2 ton gross)
8	Light truck (2.5 ton gross)
10	Medium truck (3.5 ton gross)
12	Heavy truck (7-7 ton gross)
15	Heavy truck (10 ton gross)
20	25 tons
25	45 tons
30	70 tons
36	110 tons



STEAMER "MARION" CA. 1910

### **Bear Brook Point** Camp Rentals and Marina

**Norm and Dan Watters**  
123 Bear Point Road  
Bowerbank, ME 04426  
Home: (207) 564-3135  
Cell: (207) 342-0787



### Dover *True Value* Hardware

"Helping is just around the corner."

Owner-Tim Robinson

69 East Main Street Dover-Foxcroft, Maine 04426  
Phone (207) 564-2274 Fax: (207) 564-0873

### **Webber** ENERGY FUELS

#### EARL BRAZIER

Chase & Kimball Oil Co.  
General Manager

45 Union Square  
Dover-Foxcroft, ME 04426  
(207) 564-3324

### MOUNTAIN'S MARKET, INC.

914 WEST MAIN STREET  
DOVER-FOXCROFT, ME 04426

**(207) 564-2814**



## Who's most important in the fight against invasive aquatic plants?



## You!

### Remove all plant materials!

Even the smallest plant fragment could later overwhelm a lake. Clean boats, motors, trailers, anchors, lines and fishing equipment before and after launching. Flush engine cooling water to expel plant fragments.

### Dispose of plant materials!

Place plant debris, engine cooling water and livewell water high, dry and away from open water.

### Avoid weedy waters!

Don't give invaders the chance to spread—steer, paddle and swim clear of plants.

### Lend a hand!

Take a Plant Patrol workshop and be on the lookout for suspicious plants in your favorite lake or pond. Volunteer to be a courtesy boat inspector or to distribute fliers and inform boaters.

### And don't forget your Sticker!

It's an annual requirement and certainly a small price for keeping Maine's lakes and ponds pristine. (Be sure to affix to the boat's bow next to registration.)



**STOP AQUATIC  
HITCHHIKERS!**

## Who are you going to call?

For more information on boat stickers, invasive aquatic plants, or to identify suspicious plants...



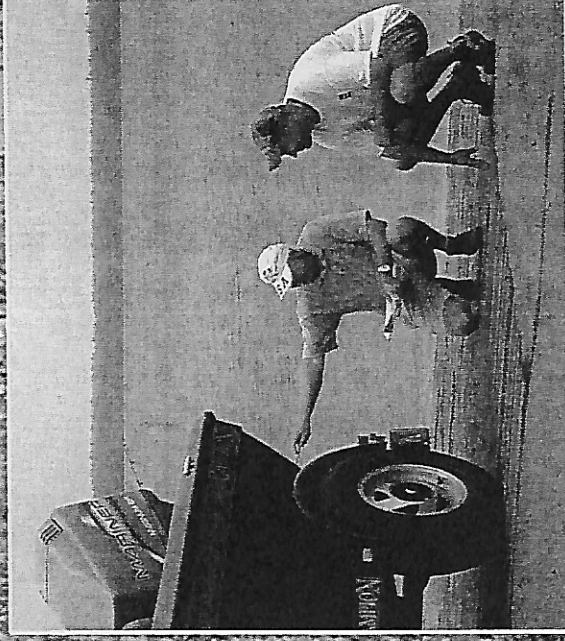
Maine Department of  
Environmental Protection  
**1-800-452-1942**

Maine Department of Inland  
Fisheries and Wildlife  
**1-207-287-8000**

[www.mainedep.com](http://www.mainedep.com)  
[www.mefishwildlife.com](http://www.mefishwildlife.com)



## Your Boat Sticker and Maine...



**Together  
We're Fighting  
Aquatic Invaders**



## They're here...

Invasive aquatic plants—aggressive, non-native weeds able to choke life from your favorite lake, pond or river.

These pests put our environment at risk. At stake is Maine's tradition of quality boating, fishing and swimming.

Maine's lucky—of all states, it is the least infested. But just over our borders and in a handful of Maine lakes are many unwelcome plants, waiting to steal a ride on your boat or boat trailer, fishing tackle or in your bait bucket.

Maine—through its lake associations, volunteers, concerned sportsmen and state agencies—is ready. What we do today, *together*, makes *all* the difference.

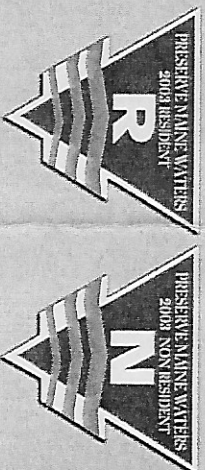
Thanks to your Boat Sticker, here's how...



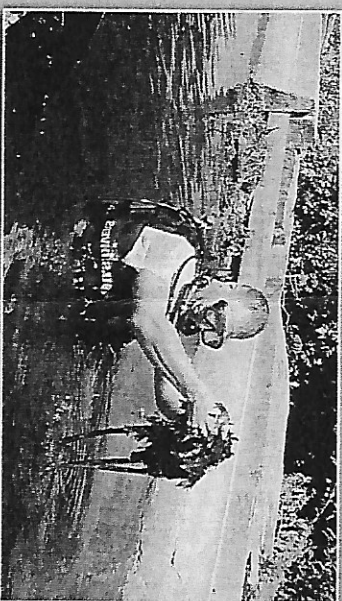
**Inspections:** Your Boat Sticker helps fund local efforts to inspect boats and has trained 120 volunteers to inspect more than 6,000 boats for invasive plants. Also, state inspectors offer courtesy examinations at *hot spots*—boat ramps on lakes known to be infested.



## Your Boat Sticker Dollars at Work



**Site management and rapid response:** Maine's infested ponds call for immediate attention. Your Boat Sticker pays for barriers that prevent downstream infestations, provides limited weed control services and assists local efforts to hand remove invasive plants.



**Monitoring:** Like human health, lake health benefits from early diagnosis. Your Boat Sticker trains plant patrollers to identify invaders.



## Interstate efforts: Your Boat

Sticker permits Maine to team up with other states to tackle invasive plants regionally. The benefits include plant warnings and the exchange of information on prevention and control measures used elsewhere.



**Education:** Prevention is the best solution to the invasive plant crisis: the more weed-wise boaters are, the less likely they'll spread these troublesome hitchhikers from lake to lake. Your Boat Sticker provides turnpike toll handouts, boat ramp signs and invaluable training sessions.





In Maine in 2003. (see photo) Courtesy of Vern and Sandi Johndro

I'm sure most people are aware of the death of longtime Sebec Laker and Dover-Foxcroft businessman Edgar (Bud) Prouty. Bud was an important Director of The Sebec Lake Association, and will be sorely missed.

Our condolences to his family.

Please visit our website at [www.sebeclake.com](http://www.sebeclake.com)

When patronizing our valued advertiser's, please be sure to Thank them for their valued contribution.

MERRY CHRISTMAS AND HAPPY NEW YEAR TO ONE AND ALL



## **Bear Brook Point**

Camp Rentals and Marina

**Norm and Dan Watters**

123 Bear Point Road  
Bowerbank, ME 04426

Home: (207) 564-3135

Cell: (207) 342-0787



## **Dover *TrueValue* Hardware**

"Helping is just around the corner."

*Owner-Tim Robinson*

69 East Main Street Dover-Foxcroft, Maine 04426  
Phone (207) 564-2274 Fax: (207) 564-0873

**Webber**  
ENERGY FUELS

**EARL BRAZIER**

Chase & Kimball Oil Co. 45 Union Square  
General Manager Dover-Foxcroft, ME 04426  
(207) 564-3324

## **MOUNTAIN'S MARKET, INC.**

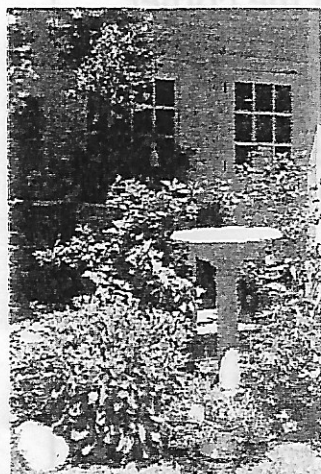
914 WEST MAIN STREET  
DOVER-FOXCROFT, ME 04426

**(207) 564-2814**



ORIGINAL TICKET 1976 RIPPLING WAVE 111

DOVER FOXCROFT, TOWN BEACH 1940s



Sebec Village Shops, Inc.

Cafe: (207) 564-3223

Market: (207) 564-3433

Post Office: (207) 564-0136

Fax: (207) 564-8058



45 Union Square

Dover-Foxcroft, ME 04426

(207) 564-3324

Chase & Kimball Oil Co.

General Manager





**SEBEC LAKE ASSOCIATION, INC.**  
P.O. BOX 303  
Dover-Foxcroft, Maine 04426-0303

## **MEMBERSHIP APPLICATION / DUES PAYMENT**

DUES ARE DUE ON JULY FIRST OF EACH YEAR. PLEASE COMPLETE THE FOLLOWING FORM TO THE BEST OF YOUR KNOWLEDGE. WE ARE ATTEMPTING TO UPGRADE OUR MAILING LIST TO BETTER SERVE OUR MEMBERS AND LAKE PROPERTY OWNERS. THANKS.

NAME: \_\_\_\_\_

MAILING ADDRESS \_\_\_\_\_  
\_\_\_\_\_

PROPERTY ADDRESS, MAP & LOT NUMBER FROM YOUR TAX BILL IF POSSIBLE

NEW MEMBER, OR RENEWAL (please circle)

E-MAIL ADDRESS if on-line \_\_\_\_\_

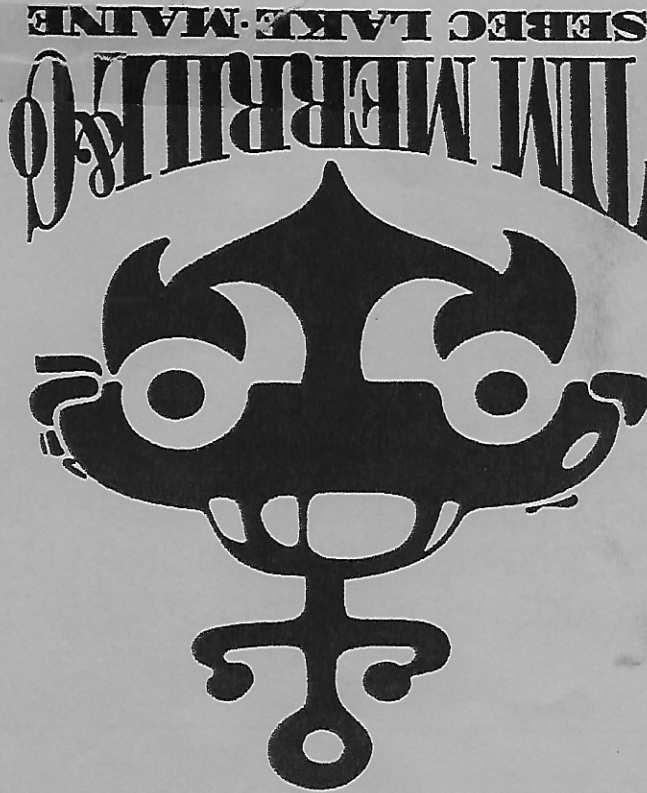
DUES ARE CURRENTLY \$ 15.00 YEARLY

MAIL CHECKS FOR DUES TO  
**SEBEC LAKE ASSOCIATION TREASURER,**  
**P.O. BOX 303 • DOVER-FOXCROFT, MAINE 04426**

ANY QUESTIONS OR PERCEIVED PROBLEMS REGARDING  
SEBEC LAKE ASSOCIATION, PLEASE CONTACT

DAVE RAYMOND, P.O. BOX 96 • SEBEC VILLAGE, MAINE 04481  
TELEPHONE, 564-7460 AFTER 7 A.M. AND BEFORE 11:00 P.M. THANKS.

WINTERS, DAVE RAYMOND, 12 OLD REDDING RD • W. REDDING, CT. 06896  
(203)-438-6865



Sebec Lake Association  
Dave Raymond  
12 Old Redding Rd.  
W. Redding, CT 06896

